

*Servus. Aloha. Ciao. Hola. Hello. Hoi. Hallo. Olá. Hej.
Cześć. Xin chào. Halo. Sveiki. Labas. Tere.
Merhaba. Hei. Ahoj. Helló. Salut. Привет.*

Kühne + Nagel Euroshipping GmbH

WHO WE ARE

Centre of Competence for River Shipping



Located at Regensburg,
at the interface for Rhine-Main-
Danube Traffics



Founded in 1996



Shareholders:
Kühne + Nagel Beteiligungs-AG ,
Luxemburg (51%)
Logistik Service GmbH Linz (49%)

WHO WE ARE

Centre of Competence for River Shipping



Inland shipping forwarder with its own shipping company structure and direct access to a comprehensive European network



Customised innovative logistics solutions with pre-main/on-carriage, handling services and added value services



Quality leader for sustainable transport, e.g. GMP+/FSA certification for animal feed. Transport licence according to KrWG (Circular Economy Act) for waste and associated training courses

WHO WE ARE

Focus on European Inland Navigation

Large network with 60 specialists throughout Europe with decades of professional experience

Access to transshipment terminals along the Rhine-Main-Danube axis and in seaports

Brokerage and charter services for seagoing vessels





Product Groups



Steel



Iron ore



Grain



Waste according to KrWG
(Circular Economy Act)
§53/§54



Fertilizer



Coal



Wood

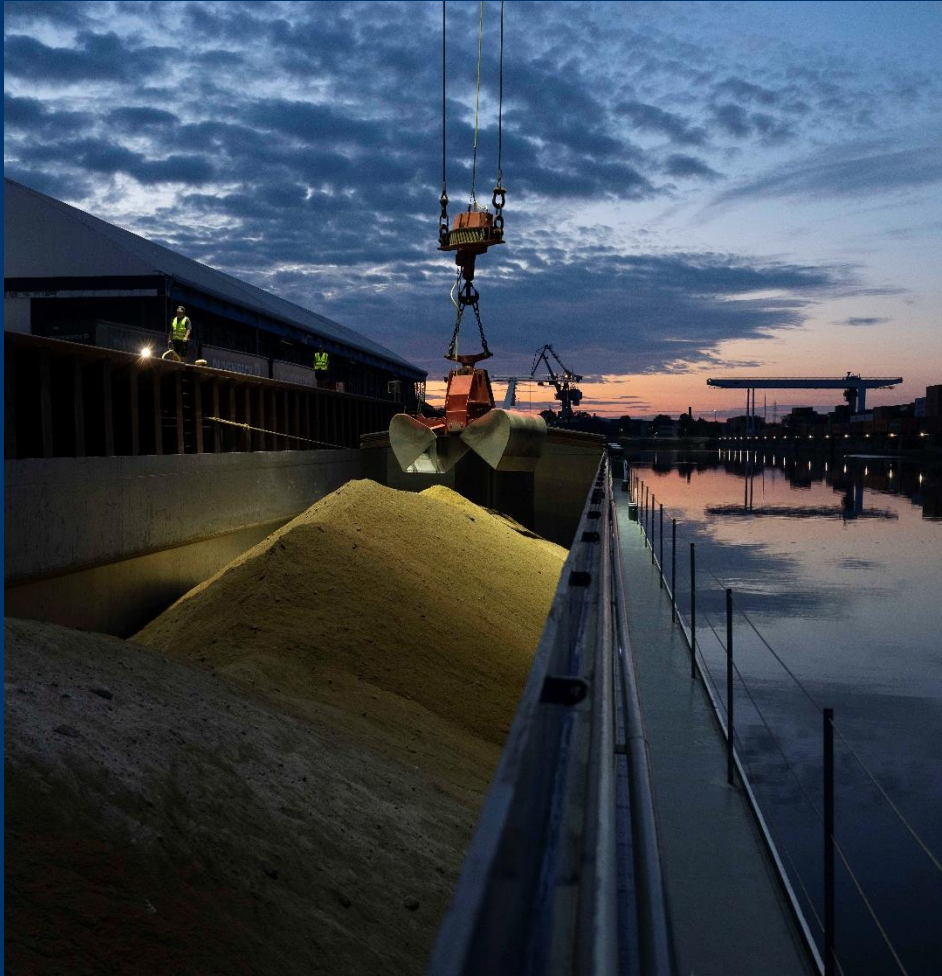


High & Heavy

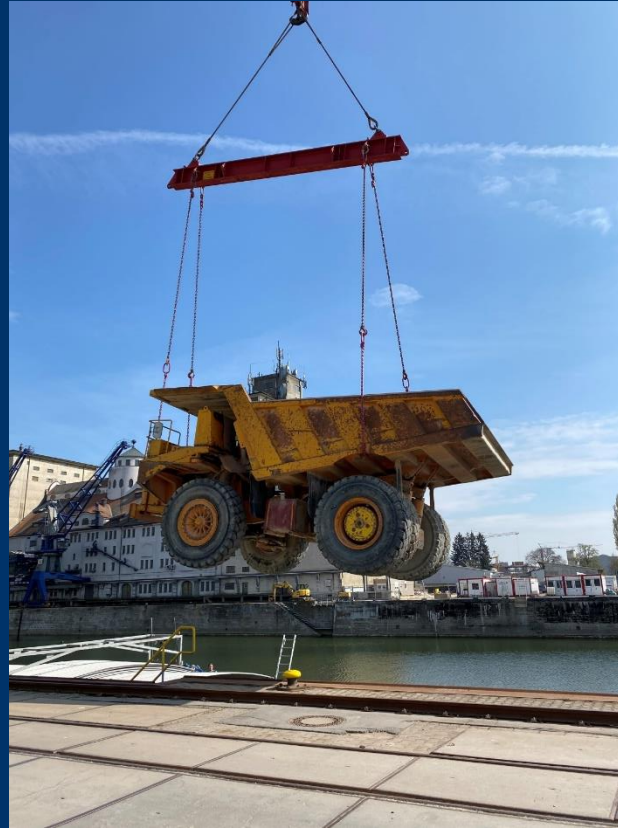


Other Materials

Daily Business – Main Routes to ARA-Ports| Black Sea Region



Special Shipments – Main Routes to ARA Ports | Black Sea Region



OUR MODULAR COMPONENTS FOR THE CONSTRUCTION OF YOUR LOGISTIC CHAIN

Pre-

Main-

On-Carriage



OUR MODULAR COMPONENTS FOR THE CONSTRUCTION OF YOUR LOGISTIC CHAIN

Add on:



Storage acc. to
BlmSchG (Federal
Immission Control
Act)



Loading and
unloading with
various construction
machines



Consolidation of
goods; Optimised
logistics processes



Tracking & Support



Brokerage and
charter services
for seagoing
vessels

QUALITY AND STANDARDS



Global integration into the KN network enables worldwide integration of all modes of transport



Modern technologies and customer orientated service



Specialists in the waste sector with experience in different types of waste



Ensuring of sustainable transport, e.g. transport capacity optimisation,
operation of ships with HVO100



Comprehensive QSHE (quality, security, health, environment) standards,
guaranteed by integration into group processes, e.g. ISO 9001:2015

Contact:

Kühne + Nagel Euroshipping GmbH
Linzer Straße 13
D-93055 Regensburg



+49 (0)941 60805-0

knreg.euroshipping@kuehne-nagel.com

