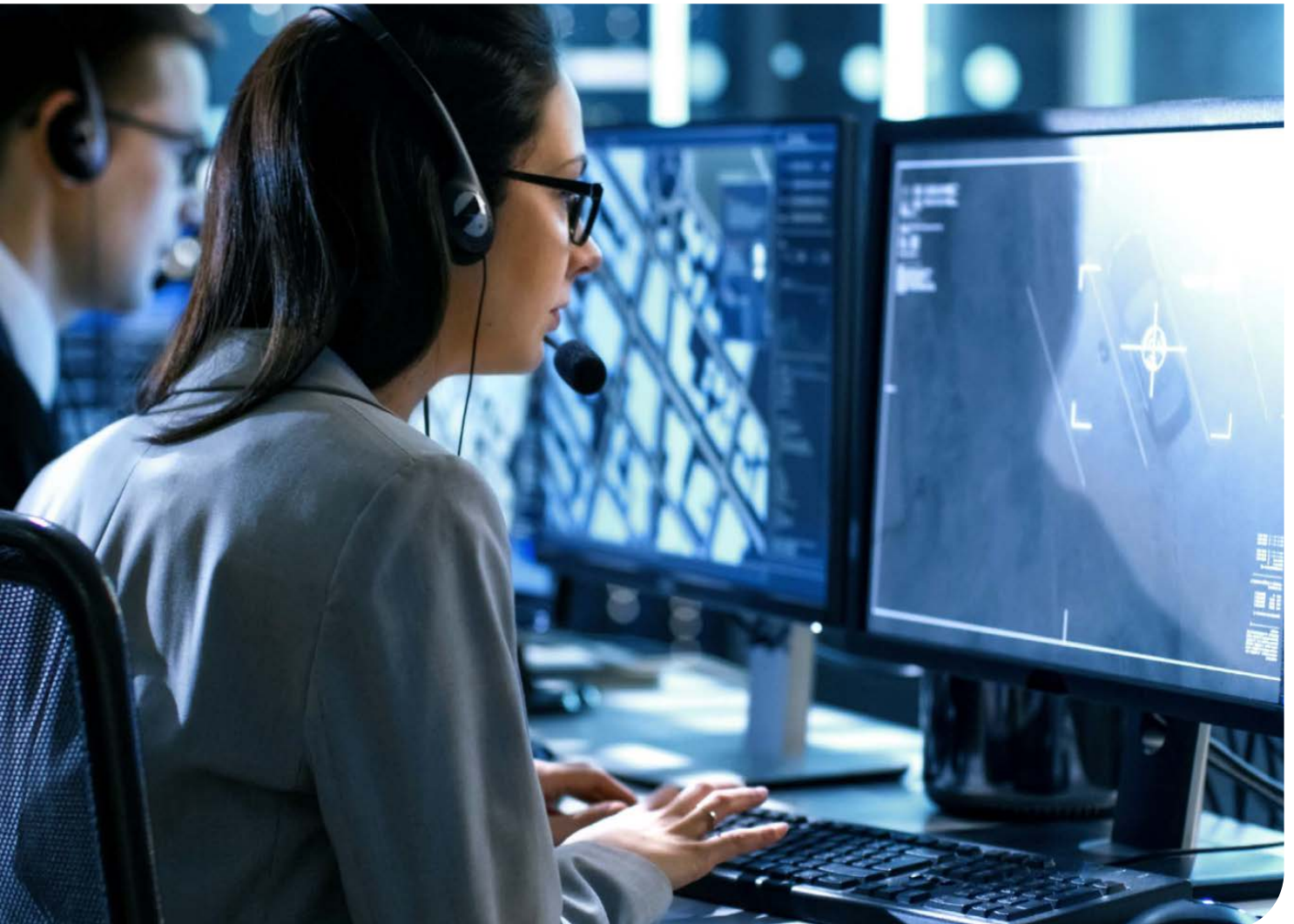


Risk Mitigator

An extra layer of security for your supply chain

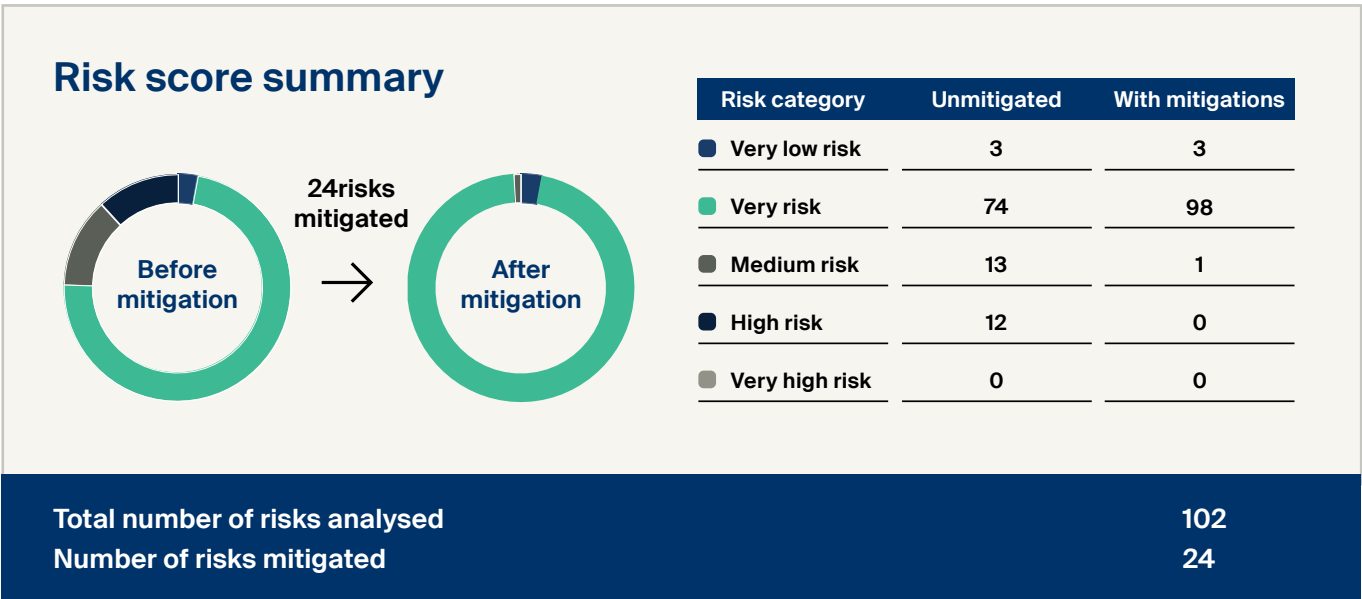
When handling sensitive and high-value cargo for Semicon shipments, surprises are the last thing you want. Our advanced digital tool performs lane risk assessments (LRA) to identify and avoid potential risks in your supply chain.



The integrity and safety of your shipments rely on the ability to make informed decisions about your supply chain.

Collating and analysing data from both Kuehne+Nagel and a broad network of carriers, our experts **identify critical control points and assess potential threats** along your shipment’s journey.

The one-of-a-kind Risk Mitigator tool is tailored to the transport lane, specific shipment requirements and handling instructions. Armed with this data, the tool produces a transparent report, calculating the impact and likelihood of each type of risk with complete visibility. By jointly introducing measures and mitigations, identified risks can be reduced until an acceptable level is achieved.



Circumstances are not beyond your control. Risk Mitigator helps you stay prepared.

- Mishandling, damage or loss of cargo
- Physical shock, impact or temperature excursions
- Trucking incidents such as theft or vandalism
- Effects of delays



Get a comprehensive view of the risks associated with your transport lanes.

